

ST. LUCIE INLET MARTIN COUNTY, FLORIDA PROJECT CONDITION / EXAM SURVEY FY22 7, 10 & 16-FOOT PROJECT

SURVEY NOTES

- REFER TO SURVEY NO. 22-078.
 - SOUNDINGS ARE IN FEET AND TENTHS AND REFER TO NOAA'S REPORTED MEAN LOWER LOW WATER (MLLW) OF THE 1983-2001 TIDAL EPOCH.
 - TIDAL REDUCTIONS WERE OBTAINED UTILIZING A REAL-TIME KINEMATIC (RTK) GPS AND REFERENCED TO MLW UTILIZING A KINEMATIC TIDE DATUM (KTD) MODEL. KTD FILE NAME IS: "INDIANRIVER-STLUCIE-MARTIN-20140527.KTD".
 - ALL ELEVATIONS ARE BELOW THE CHART DATUM UNLESS PRECEDED BY A (+) SIGN.
 - PLANE COORDINATES ARE BASED ON THE TRANSVERSE MERCATOR PROJECTION FOR THE EAST ZONE OF FLORIDA AND REFERENCED TO THE CURRENT REALIZATION OF THE NORTH AMERICAN DATUM OF 1983 (NAD83), BASED ON THE NOAA NATIONAL SPATIAL REFERENCE SYSTEM (NSRS).
 - ALL STATIONING REFERS TO THE CENTERLINE OF THE CHANNEL.
 - THIS SURVEY WAS PERFORMED USING REAL-TIME KINEMATIC (RTK) GPS POSITIONING WITH THE FOLLOWING REFERENCE BASE LOCATION:
REFERENCE BASE LOCATED AT "T 693" (PID: BBFH83)
 - DEPTHS DEPICTED BY THIS SURVEY ARE REFERENCED TO MLLW, TIDAL EPOCH 1983-2001, AS REPORTED BY THE NATIONAL OCEANIC AND ATMOSPHERIC ADMINISTRATION (NOAA). A MODIFIED VERSION OF NOAA'S VDATUM MODEL WAS USED TO CALIBRATE TO THE PUBLISHED MLLW HEIGHTS OF THE BENCH MARK BELOW:
NOAA TIDAL STATION 872-2381 FOR ALL CUTS (PID: AF6967)
VERTICAL MEASUREMENTS WERE MADE USING AN EDGETECH 6205 COMBINED MULTI-BEAM AND SIDESCAN AND A TELEDYNE ODOM ECHOTRAC E20 DUAL-FREQUENCY 28/200 KHZ SINGLE-BEAM TRANSDUCER. ALL SOUNDINGS SHOWN ARE IN HIGH FREQUENCY.
TOPO MEASUREMENTS WERE MADE USING A TRIMBLE R10 RECEIVER.
- | VESSEL | DATE OF SURVEY | CUT |
|--------|----------------|-----------------------------|
| SB-44 | 12 JUL 2022 | IMPOUNDMENT BASIN, CUTS 1-5 |
| TOPO | 14 JUL 2022 | IMPOUNDMENT BASIN |
- AIDS TO NAVIGATION WERE LOCATED DURING THIS SURVEY.
 - THE INFORMATION DEPICTED ON THIS MAP REPRESENTS THE RESULTS OF SURVEYS MADE ON THE DATES INDICATED ABOVE AND CAN ONLY BE CONSIDERED AS INDICATING THE GENERAL CONDITIONS AT THAT TIME. THIS CHART IS SOLELY FOR THE DISTRIBUTION OF AVAILABLE DEPTHS AT THE TIME OF THE SURVEY.
 - SURVEY ACCURACY PERFORMANCE STANDARDS, QUALITY CONTROL, AND QUALITY ASSURANCE REQUIREMENTS WERE FOLLOWED DURING THIS SURVEY IN ACCORDANCE WITH USACE EM 1110-2-1003, HYDROGRAPHIC SURVEYING, 30 NOV 2013.

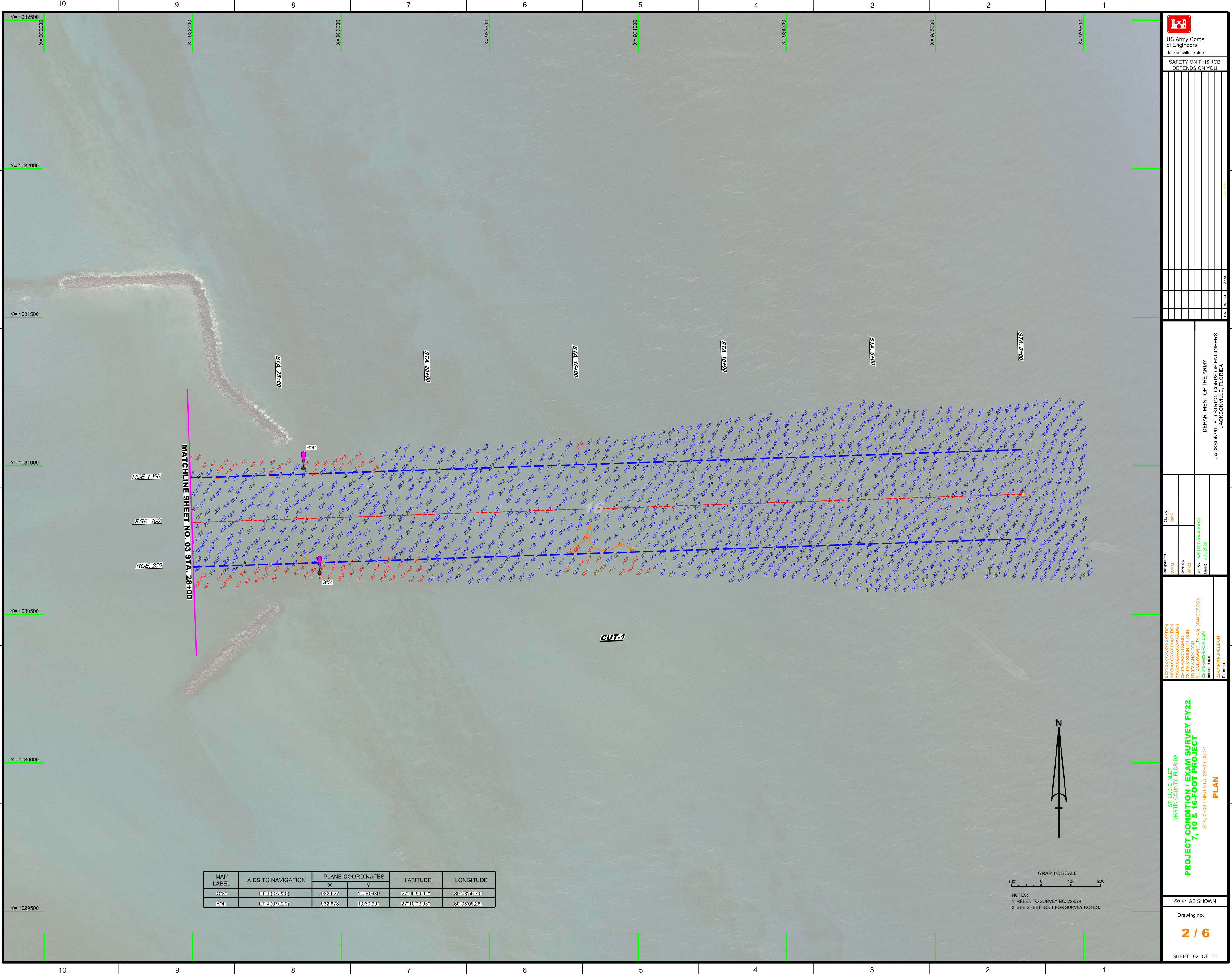
LEGEND	
	MONUMENT
	LIGHTED BEACON
	GREEN DAY BEACON
	RED DAY BEACON
	RED LIGHTED BUOY
	GREEN LIGHTED BUOY
	CAN BUOY
	NUN BUOY
	TIDE STAFF
	PROJECT DEPTH

US Army Corps of Engineers
Jacksonville District
SAFETY ON THIS JOB
DEPENDS ON YOU

DEPARTMENT OF THE ARMY
JACKSONVILLE DISTRICT, CORPS OF ENGINEERS
JACKSONVILLE, FLORIDA

ST. LUCIE INLET
MARTIN COUNTY, FLORIDA
PROJECT CONDITION / EXAM SURVEY FY22
7, 10 & 16-FOOT PROJECT
INDEX, LOCATION AND VICINITY
MAP

Scale: AS SHOWN
Drawing no.
1 / 6
SHEET 01 OF 11



MAP LABEL	AIDS TO NAVIGATION	PLANE COORDINATES		LATITUDE	LONGITUDE
		X	Y		
G-3*	LT-3 (07/220)	932,927	1030,639	27°09'59.44"	80°08'55.71"
R-4*	LT-4 (07/220)	932,873	1030,991	27°10'02.93"	80°08'56.28"

GRAPHIC SCALE
 100' 0 100' 200'
 NOTES:
 1. REFER TO SURVEY NO. 22-078.
 2. SEE SHEET NO. 1 FOR SURVEY NOTES.



US Army Corps of Engineers
 Jacksonville District

SAFETY ON THIS JOB
 DEPENDS ON YOU

DEPARTMENT OF THE ARMY
 JACKSONVILLE DISTRICT, CORPS OF ENGINEERS
 JACKSONVILLE, FLORIDA

Designed by: WRM
 Checked by: GHR
 Date: JUL 2022

XXXXXXXXXXXXXXXXXXXX.DGN
 XXXXXXXXXXXXXXXXXXXX.DGN
 XXXXXXXXXXXXXXXXXXXX.DGN
 XXXXXXXXXXXXXXXXXXXX.DGN
 XXXXXXXXXXXXXXXXXXXX.DGN
 XXXXXXXXXXXXXXXXXXXX.DGN
 XXXXXXXXXXXXXXXXXXXX.DGN
 XXXXXXXXXXXXXXXXXXXX.DGN
 XXXXXXXXXXXXXXXXXXXX.DGN
 XXXXXXXXXXXXXXXXXXXX.DGN

ST. LUCIE INLET
 MARTIN COUNTY, FLORIDA
PROJECT CONDITION / EXAM SURVEY FY22
7, 10 & 16-FOOT PROJECT
 STA. 0+00 THRU STA. 28+00 CUT-1
PLAN

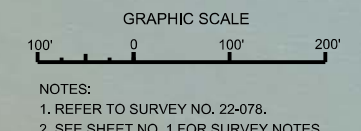


MATCHLINE SHEET NO. 4 STA. 58+00

MATCHLINE SHEET NO. 02 STA. 28+00

RGE 25
RGE 100
RGE 175

CUT-1



NOTES:
1. REFER TO SURVEY NO. 22-078.
2. SEE SHEET NO. 1 FOR SURVEY NOTES.

MAP LABEL	AIDS TO NAVIGATION	PLANE COORDINATES		LATITUDE	LONGITUDE
		X	Y		
G-5*	CAN BUOY-5 (07/22)	931.396	1,030,692	27°10'00.06"	80°09'12.65"
R-6*	NUN BUOY-6 (07/22)	931.340	1,031,020	27°10'03.31"	80°09'13.25"

US Army Corps of Engineers
Jacksonville District

SAFETY ON THIS JOB
DEPENDS ON YOU

DEPARTMENT OF THE ARMY
JACKSONVILLE DISTRICT, CORPS OF ENGINEERS
JACKSONVILLE, FLORIDA

<p style="font-size: 8px;">Designed by: WRM Drawn by: WRM Checked: WRM Date: JUL 2022</p>	<p style="font-size: 8px;">Checked by: GHR</p>	<p style="font-size: 8px;">22-078-BAV.DGN 22-078-BAV-CONV.DGN 22-078-BAV-TOPG_JUL19.DGN 22-078-BAV-TOPG_JUL20.DGN 22-078-BAV-TOPG_JUL21.DGN 22-078-BAV-TOPG_JUL22.DGN 22-078-BAV-TOPG_JUL23.DGN 22-078-BAV-TOPG_JUL24.DGN 22-078-BAV-TOPG_JUL25.DGN 22-078-BAV-TOPG_JUL26.DGN 22-078-BAV-TOPG_JUL27.DGN 22-078-BAV-TOPG_JUL28.DGN 22-078-BAV-TOPG_JUL29.DGN 22-078-BAV-TOPG_JUL30.DGN 22-078-BAV-TOPG_JUL31.DGN 22-078-BAV-TOPG_JUL32.DGN 22-078-BAV-TOPG_JUL33.DGN 22-078-BAV-TOPG_JUL34.DGN 22-078-BAV-TOPG_JUL35.DGN 22-078-BAV-TOPG_JUL36.DGN 22-078-BAV-TOPG_JUL37.DGN 22-078-BAV-TOPG_JUL38.DGN 22-078-BAV-TOPG_JUL39.DGN 22-078-BAV-TOPG_JUL40.DGN 22-078-BAV-TOPG_JUL41.DGN 22-078-BAV-TOPG_JUL42.DGN 22-078-BAV-TOPG_JUL43.DGN 22-078-BAV-TOPG_JUL44.DGN 22-078-BAV-TOPG_JUL45.DGN 22-078-BAV-TOPG_JUL46.DGN 22-078-BAV-TOPG_JUL47.DGN 22-078-BAV-TOPG_JUL48.DGN 22-078-BAV-TOPG_JUL49.DGN 22-078-BAV-TOPG_JUL50.DGN 22-078-BAV-TOPG_JUL51.DGN 22-078-BAV-TOPG_JUL52.DGN 22-078-BAV-TOPG_JUL53.DGN 22-078-BAV-TOPG_JUL54.DGN 22-078-BAV-TOPG_JUL55.DGN 22-078-BAV-TOPG_JUL56.DGN 22-078-BAV-TOPG_JUL57.DGN 22-078-BAV-TOPG_JUL58.DGN 22-078-BAV-TOPG_JUL59.DGN 22-078-BAV-TOPG_JUL60.DGN 22-078-BAV-TOPG_JUL61.DGN 22-078-BAV-TOPG_JUL62.DGN 22-078-BAV-TOPG_JUL63.DGN 22-078-BAV-TOPG_JUL64.DGN 22-078-BAV-TOPG_JUL65.DGN 22-078-BAV-TOPG_JUL66.DGN 22-078-BAV-TOPG_JUL67.DGN 22-078-BAV-TOPG_JUL68.DGN 22-078-BAV-TOPG_JUL69.DGN 22-078-BAV-TOPG_JUL70.DGN 22-078-BAV-TOPG_JUL71.DGN 22-078-BAV-TOPG_JUL72.DGN 22-078-BAV-TOPG_JUL73.DGN 22-078-BAV-TOPG_JUL74.DGN 22-078-BAV-TOPG_JUL75.DGN 22-078-BAV-TOPG_JUL76.DGN 22-078-BAV-TOPG_JUL77.DGN 22-078-BAV-TOPG_JUL78.DGN 22-078-BAV-TOPG_JUL79.DGN 22-078-BAV-TOPG_JUL80.DGN 22-078-BAV-TOPG_JUL81.DGN 22-078-BAV-TOPG_JUL82.DGN 22-078-BAV-TOPG_JUL83.DGN 22-078-BAV-TOPG_JUL84.DGN 22-078-BAV-TOPG_JUL85.DGN 22-078-BAV-TOPG_JUL86.DGN 22-078-BAV-TOPG_JUL87.DGN 22-078-BAV-TOPG_JUL88.DGN 22-078-BAV-TOPG_JUL89.DGN 22-078-BAV-TOPG_JUL90.DGN 22-078-BAV-TOPG_JUL91.DGN 22-078-BAV-TOPG_JUL92.DGN 22-078-BAV-TOPG_JUL93.DGN 22-078-BAV-TOPG_JUL94.DGN 22-078-BAV-TOPG_JUL95.DGN 22-078-BAV-TOPG_JUL96.DGN 22-078-BAV-TOPG_JUL97.DGN 22-078-BAV-TOPG_JUL98.DGN 22-078-BAV-TOPG_JUL99.DGN 22-078-BAV-TOPG_JUL100.DGN</p>
---	--	--

PROJECT CONDITION / LEXAM SURVEY FY22
7, 10 & 16-FOOT PROJECT

STA. 28+00 THRU STA. 58+00 CUT-1

PLAN

Scale: AS SHOWN

Drawing no.

3 / 6

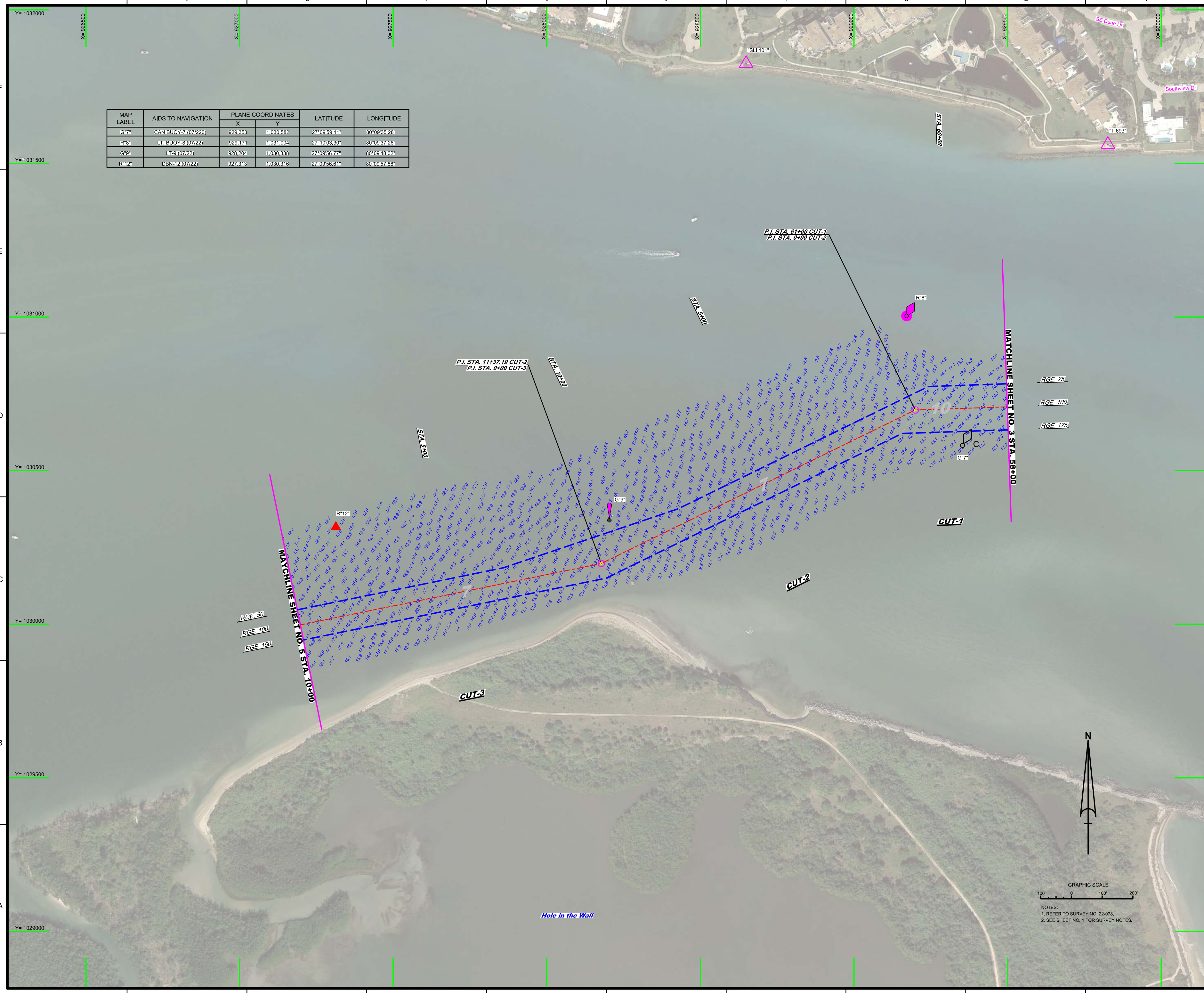
SHEET 03 OF 11

MAP LABEL	AIDS TO NAVIGATION	PLANE COORDINATES		LATITUDE	LONGITUDE
		X	Y		
G*7*	CAN BUOY 7 (07/22)	929.853	1,030,582	27°09'59.11"	80°09'35.28"
R*8*	LT BUOY 43 (07/22)	929.174	1,031,004	27°10'03.30"	80°09'37.26"
G*9*	LT 49 (07/22)	928.204	1,030,838	27°09'56.77"	80°09'48.02"
R*12*	DBN 12 (07/22)	927.813	1,030,816	27°09'56.61"	80°09'57.88"

US Army Corps of Engineers
Jacksonville District
SAFETY ON THIS JOB
DEPENDS ON YOU

DEPARTMENT OF THE ARMY
JACKSONVILLE DISTRICT, CORPS OF ENGINEERS
JACKSONVILLE, FLORIDA

Drawn by: WRM
Checked by: GHR
Date: JUL 2022



GRAPHIC SCALE
0 100 200
NOTES:
1. REFER TO SURVEY NO. 22-078.
2. SEE SHEET NO. 1 FOR SURVEY NOTES.

ST. LUCIE INLET
MARTIN COUNTY, FLORIDA

PROJECT CONDITION / EXAM SURVEY FY22
7, 10 & 16-FOOT PROJECT
STA. 58+00 CUT-1 THRU STA. 10+00 CUT-3

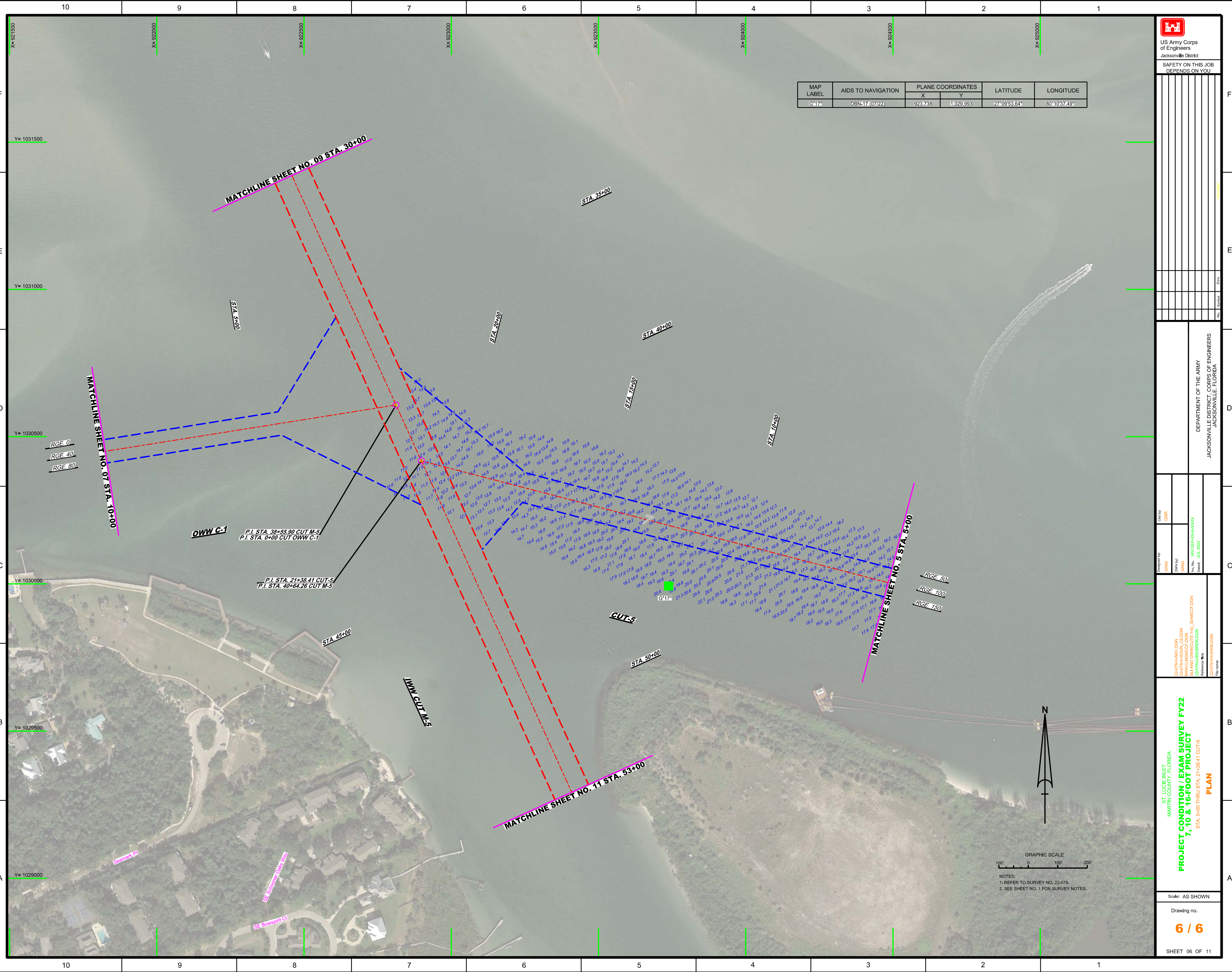
PLAN

Scale: AS SHOWN

Drawing no.
4 / 6

SHEET 04 OF 11

MAP LABEL	AIDS TO NAVIGATION	PLANE COORDINATES		LATITUDE	LONGITUDE
		X	Y		
G-17*	DBN-17 (07/22)	923,738	1,029,993	27°09'53.64"	80°10'37.49"



DEPARTMENT OF THE ARMY
JACKSONVILLE DISTRICT, CORPS OF ENGINEERS
JACKSONVILLE, FLORIDA

Checked By: GHR
Designed By: WRM
Drawn By: WRM
File No: W9225P-0000-0000
Date: JUL 2022

22-07-00-AVAV.DGN
22-07-00-SOUL_C0.DGN
22-07-00-OWW CUTS L&I_3D.ACCP.DGN
22-07-00-BS-BRDAL.DGN
Reference File:
22-07-00-HS-HUB.DGN

ST. LUCIE INLET
MARTIN COUNTY, FLORIDA
PROJECT CONDITION / EXAM SURVEY FY22
7, 10 & 16-FOOT PROJECT
STA. 5+00 THRU STA. 21+38.41 CUT-5
PLAN

Scale: AS SHOWN
Drawing no.
6 / 6
SHEET 06 OF 11

GRAPHIC SCALE
100' 0 100' 200'
NOTES:
1. REFER TO SURVEY NO. 22-078.
2. SEE SHEET NO. 1 FOR SURVEY NOTES.